

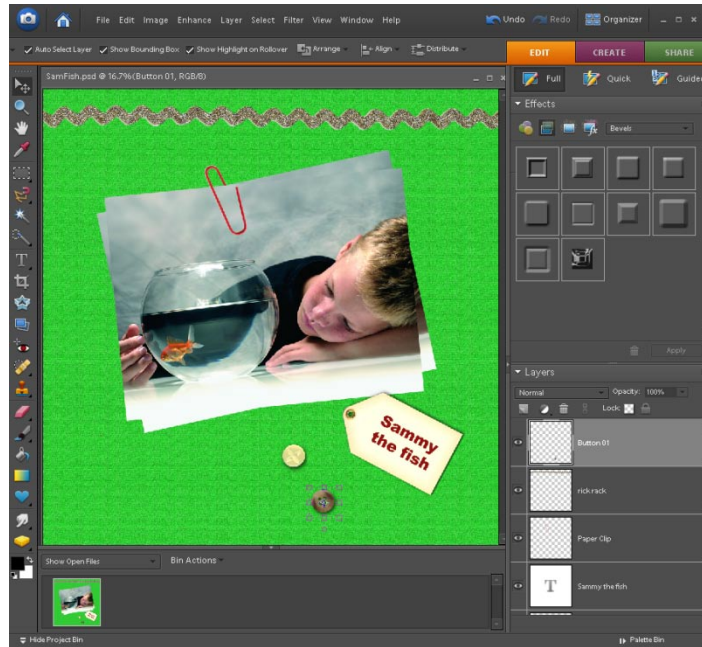
This Digital Scrapbooks and More Lesson teaches how add a digital embellishment to a Digital Scrapbooking page in Photoshop® Elements 6. Digital embellishments can be anything from digital bows, buttons, ribbons, or other digital accessories that might be added to make a digital scrapbook page look fancy and more complete.

Step 1: Open a Digital Scrapbook Page

Open your digital scrapbook page in Editor Mode. In this example this digital scrapbook page has:

- Transparent background
- Digital Scrapbook Paper
- Several images
- Text
- And some digital scrapbook embellishments

However, we are going to add one more embellishment in the next steps!



Special Note: If you are not sure how to make a [new document](#) with a transparent background, [load digital paper](#), add [images](#), and add text to make a scrapbooking page. Please check out our FREE [Helpful Hints](#) that show these steps

Check out these FREE Digital Scrapbooking Helpful Hints and Tips to get you started:



- [Opening PSE 6 in Editor Mode](#) --- (PDF Version) or (HTML Version)
- [Opening a Image in Photoshop Elements 6](#) --- (PDF Version) or (HTML Version)
- [Duplicating a Photo in PSE 6](#) --- (PDF Version) or (HTML Version)
- [Undo Changes to a Photo](#) ---- (PDF Version) or (HTML Version)
- [Zoom In or Out of a Image or Scrapbook Page](#) ---- (PDF Version) or (HTML Version)
- [Making a New Document in PSE6](#) ---- (PDF Version) or (HTML Version)

At [Digital Scrapbooks and More](#) Website

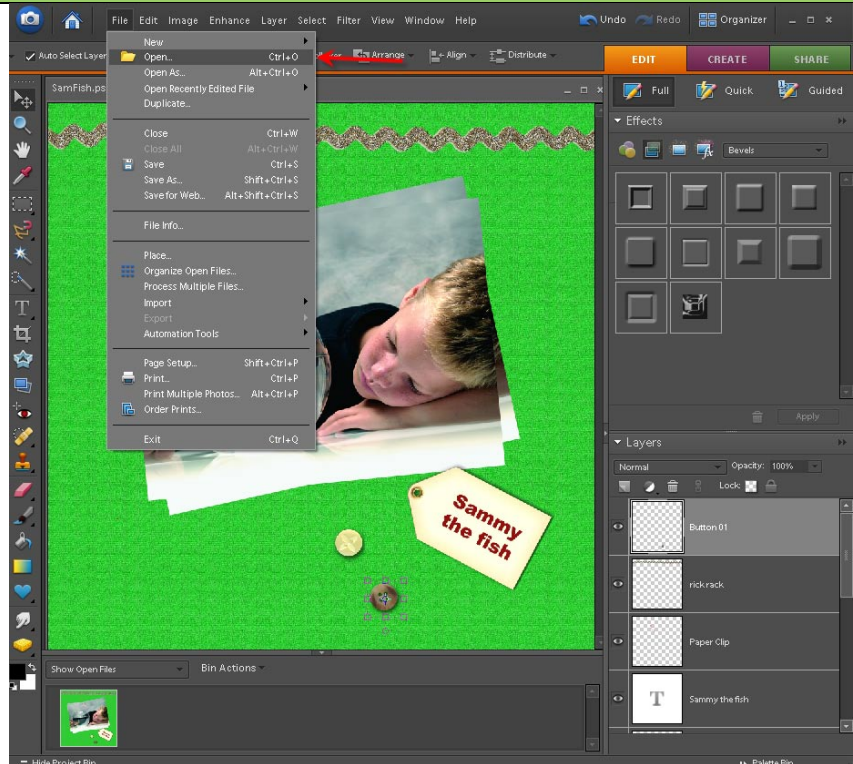
More [Helpful Hints](#) and Digital Scrapbooking [Tutorials](#)

Step 2: Open a Embellishment in PSE 6

In Editor Mode

Go to the menu
File > Open

Or shortcut keys
Ctrl + O

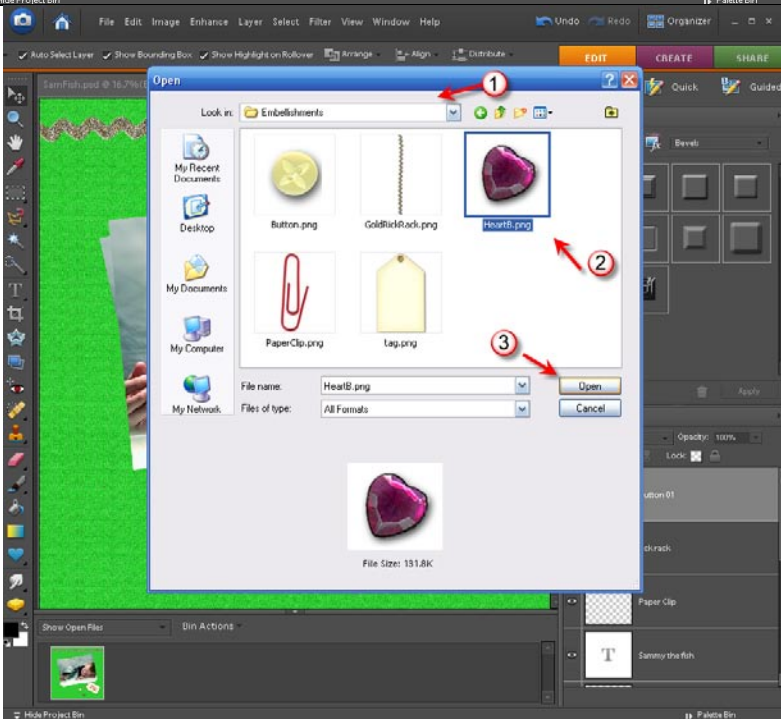


Next, navigate to the folder that holds the embellishment you want to add to your digital scrapbook page. (See #1)

Next pick the embellishment. (See #2)

Then Click on Open Button (See #3)

Note: If you need more help with this step – check out [Opening a Photo](#)

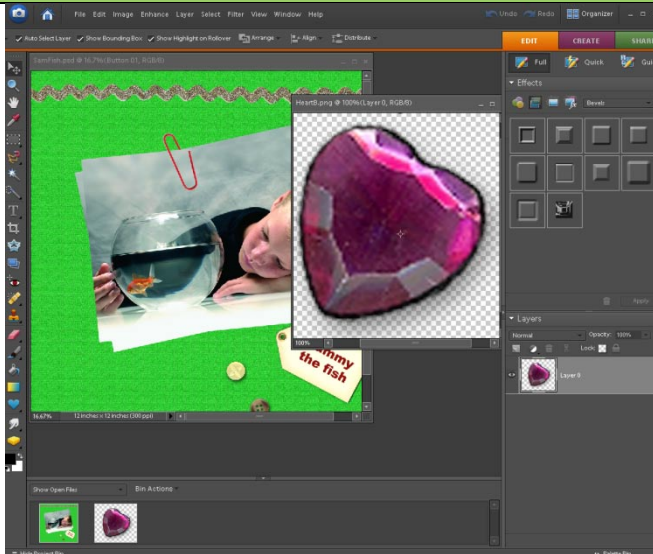


Step 3: Make a Copy of the Embellishment

Open a digital embellishment alongside your digital scrapbooking page.

In this case, a heart shaped button is our embellishment

Make a **duplicate copy of this embellishment.** For more information about making a digital copy, see our Helpful Hints Tutorial entitled "[Duplicate a Photo](#)"



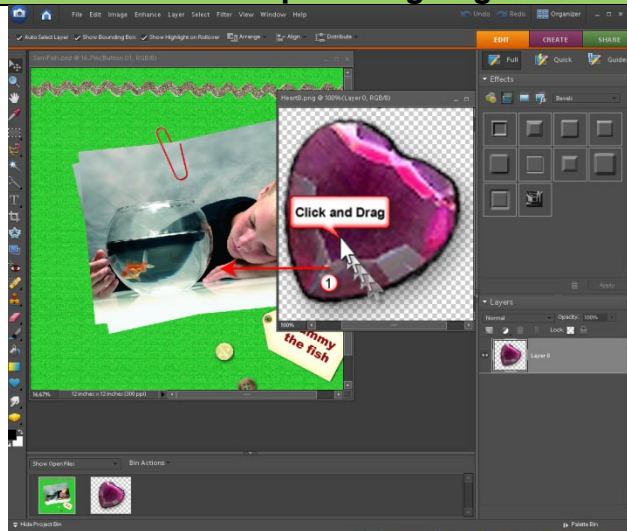
Step 4: Drag the Copied Embellishment to the Scrapbooking Page

With the **Move Tool**



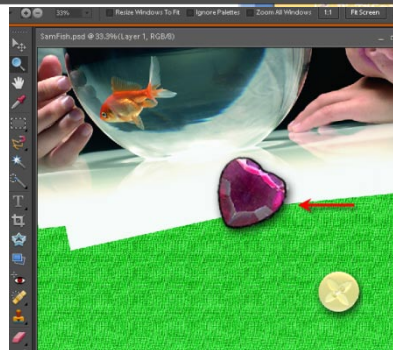
Click once on the digital embellishment copy, and **Drag** the embellishment to the digital scrapbook page. (See #1)

Move Tool shortcut Key:



Your embellishment is now on the digital scrapbook page.

Note: You can close out of the original embellishment screen now.

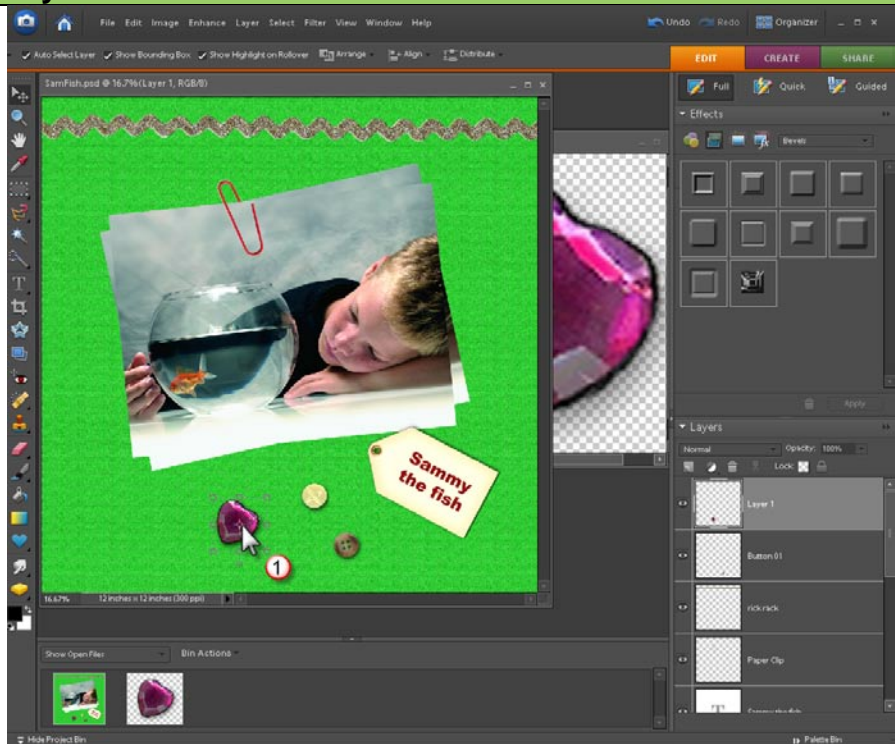


Step 5: Place and Rotate your Embellishment

With the Move Tool



Click and drag your embellishment to the location on your digital scrapbooking page.
(See #1)

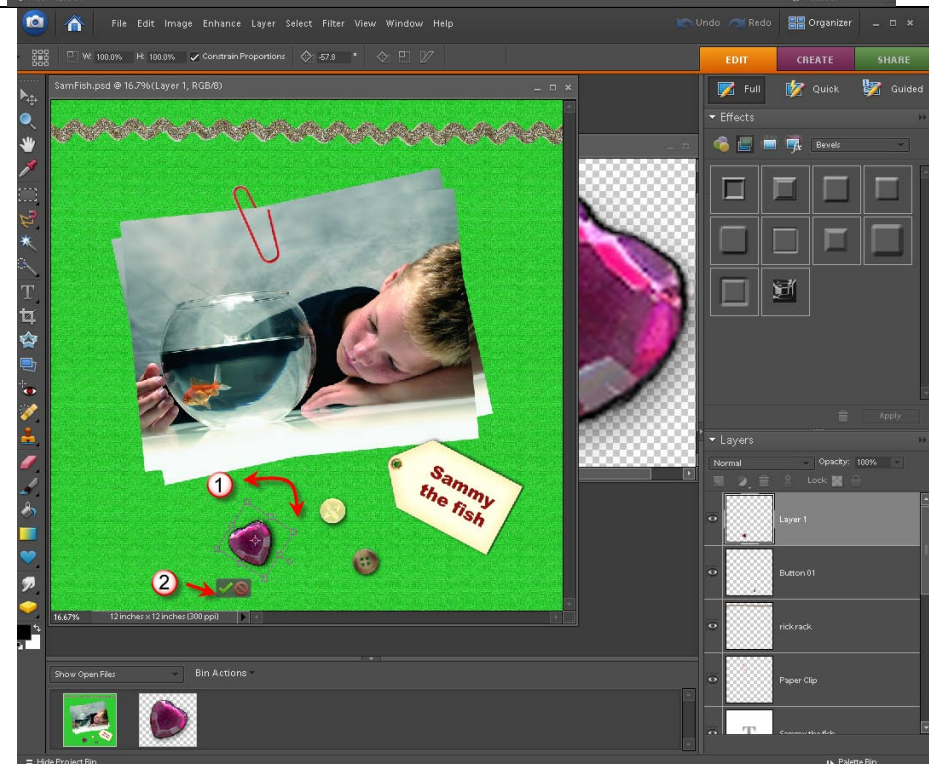


With the Move Tool



Rotate your embellishment by clicking once on your embellishment and dragging it with the arrows at the bottom of the embellishment in the direction you would like it be positioned.
(See #1)

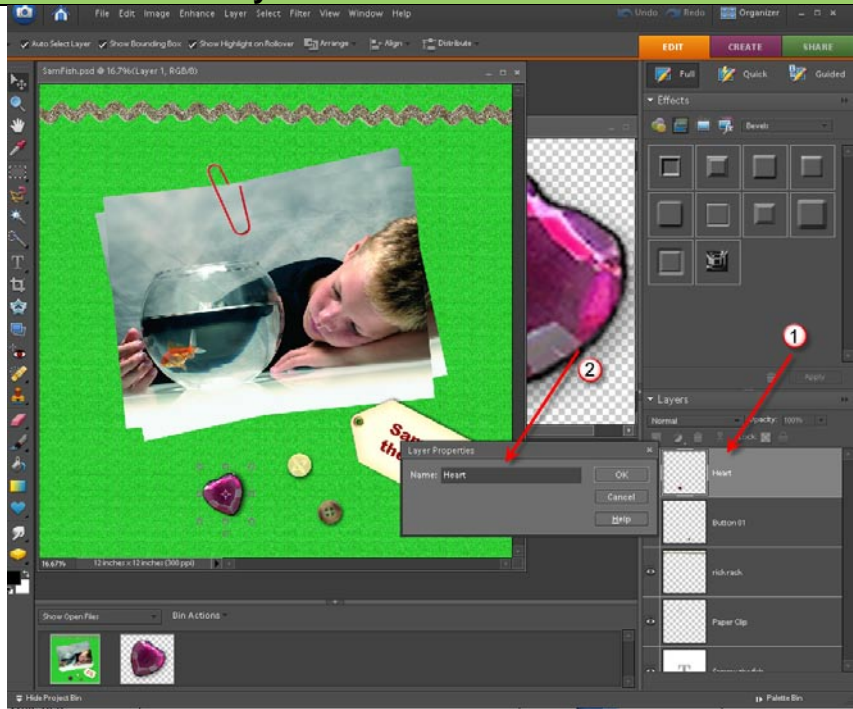
Then **Click** on the **Green Check** to ok the change. (See #2)



Step 6: Name the Embellishment in the Layer Panel

It is a good idea to **name your embellishment layer** at this time (see #1 & #2)

For more information about naming layers, please see our [Helpful Hints](#) Tutorial entitled "Naming Layers in PSE 6."



Step 7: Now you are ready to add another Embellishment or Save your Page

This lesson is completed and now you have added an embellishment to your digital scrapbooking page. At this point you can add more embellishments or save your Scrapbooking Page or even print it.

For more information about more digital scrapbooking tutorials – please check out our [Tutorials](#) at Digital Scrapbooks and More

